

WELLCARE

Soothing Heating Pad

Standard | Large

Instruction Manual

WE-167SPHD

WE-167SPLHD



MODEL: WE-167SPHD / WE-167SPLHD

EN Snuggly Heating Pad 03
 Standard | Large
 Instruction Manual

B802.601-N0820



Explanation of symbols



Read instructions



Do not use when folded or creased



Do not pierce with needles



Not to be used by very young children
(0-3 years)



Do not dry clean



30°C extra gentle washing program



Do not bleach



Do not tumble dry



Do not iron

Thank you for purchasing the Soothing Heating Pad from Wellcare.

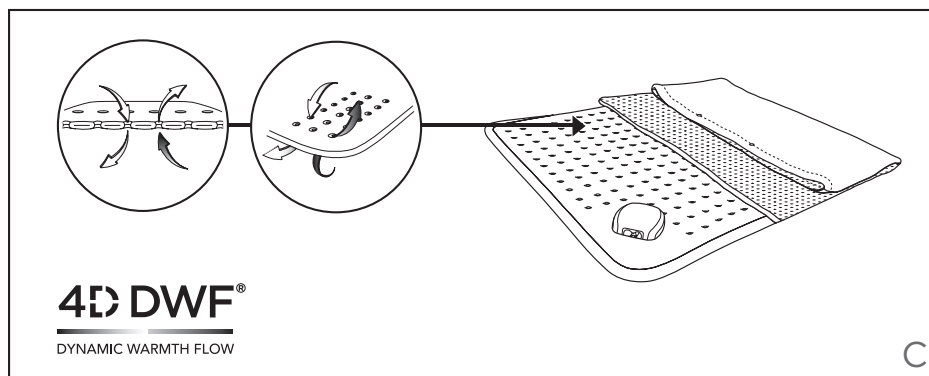
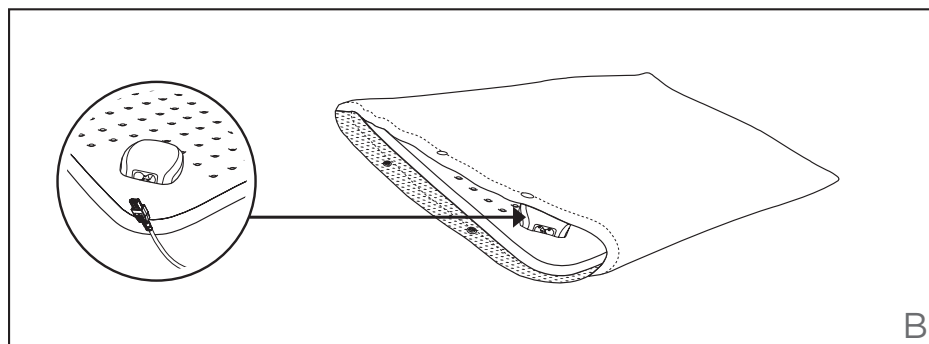
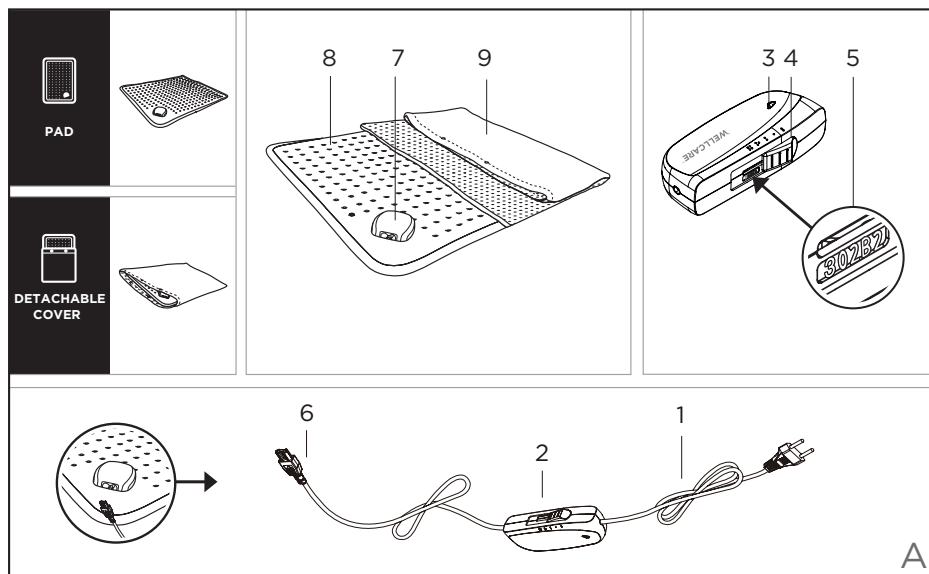
To enjoy the most comfortable experience and the greatest satisfaction, please take a few minutes to read this instruction carefully before using this product.

IMPORTANT SAFETY INSTRUCTIONS RETAIN FOR FUTURE USE

KEEP CAREFULLY IN CASE IT IS NEEDED!

This heating pad is designed to be used for many years if it is properly used. Read the instruction carefully to prevent damage or danger caused by incorrect use. Keep this instruction manual at an easy-to-access location so you can refer back when necessary.

If you let somebody else use this product, please pass on this instruction manual as well and make sure the user has read it before using.



4D DWF® Technology (please see fig. C)

This heating pad utilizes WELLCARE's recent and the most innovative technology – 4D DWF®. While this technology pioneers in the flexible heating industry, its production process is also the state of the art.

Our physical living environment consists of three dimensions, width, length, and depth; hence, the term “3D”. As Wellcare introduces to you the 4D DWF® technology, the “temperature” brought to you by dynamic flow of warmth is the definition of the fourth dimension. 4D DWF® employs concepts of breathing system which creates full-body heat circulation for heat to disperse evenly, thoroughly, and quickly. The heat is generated by heating elements, builds up and gathers around several hundred uniquely designed circular holes. Through these holes, the heat flows bi-directionally to create a gentle heat flow and the thermal energy can flow rapidly to warm up human bodies.

There are many benefits of this innovative technology :

- Better breathability
- Rapid heating
- Higher temperature
- Uniquely designed holes to provide 360° warmth circulation
- Greater heat distributing area
- Effective heat transmission
- Strands of warmth flow retain air moisture
- Warmth kept at a constant temperature
- Energy saving

This product is not intended for medical use in hospitals.

- Please read carefully and follow the instructions.
- Examine the appliance frequently for signs of wear or damage. If there are such signs or if the appliance has been misused or does not work, return it to the supplier before switching it on again.
- Do not use this appliance if there is visible damage.
- Use the appliance only as described in this instruction manual.
- Before connecting the device to your power supply, please ensure that the supply voltage stated on the rating plate is compatible with your mains supply.
- The appliance must not be used when folded or crumpled.
- Do not use the appliance for persons who cannot move without help, small children, persons who cannot feel heat, or animals. Persons who can feel heat to some extent may only use the appliance with supervision.
- This appliance must not be used by persons insensitive to heat and other very vulnerable persons who are unable to react to overheating.
- If the mains cable of the product is damaged, it must be replaced by the manufacturer, its

customer service department or qualified persons to prevent hazards.

- Do not treat this product as a sheet or tuck it in the mattress.
- Do not pierce the appliance with needles, safety pins or other sharp objects.
- Do not tug, twist or make sharp bends to the cables.
- Do not carry or unplug the product by pulling its mains cable.
- Do not expose the controller or the mains cable to moisture or liquids.
- Do not use the product when it is damp or wet and only use it in dry environments.
- Do not sit on the heating pad.
- Avoid sharp bending or bundling of the heating pad.
- The cable and control unit of the appliance can give rise to risks of entanglement, strangulation, tripping or treading if not correctly arranged. The user shall make sure that excess ties and electric cords shall be arranged in a safe way.
- While the heating pad is switched on,
 - Do not place any large or heavy objects on it such as suitcases, etc.,
 - Do not place any heat sources on it such as hot water bottles, heating pads or such like.
 - Due to the components in the controller will make it slightly warm, never let the controller to be covered or placed on the heating pad,

pillows and the like or lie on the electric mattress heater.

- Do not fold the heating pad when it is hot.
- This heating pad is only designed to warm up the human body. Do not use it on pets or other animals.
- Caution! Never fall asleep while the appliance is in operation.
- When the appliance will be used for an extended period (falling asleep), the temperature setting should be adjusted to the lowest level (setting 1) for continuous use to avoid overheating on the same body part, which may lead to burns to the skin.
- Prolonged use can cause burns to the skin.
- Children should be supervised to ensure that they do not play with this appliance.
- Children below the age of three (0~3) are not allowed to use this device due to their inability to react to overheating.
- This device may not be used by young children over the age of three (3) unless the control unit has been pre-set by a parent or guardian or the child has been adequately instructed on how to operate the control unit safely.
- The appliance can be used by children older than 3 years and younger than 8 years under supervision and with the control always set to minimum temperature value.
- This appliance may be used by children over the

age of eight (8), and persons with reduced physical, sensory or mental capabilities or lack of experience or knowledge if they have been supervised or instructed concerning use of the appliance in a safe way and understand the hazards involved.

- Cleaning and user maintenance shall not be made by children without supervision.
- If you have any concerns about health issues, please consult with your doctor before using the appliance.
- Do not use the heating pad on parts of the body that are swollen, injured or inflamed.
- If you experience any pain or discomfort while using the unit, stop using it immediately.
- If you use a pacemaker, please consult your doctor and the manufacturer of the pacemaker before using this product due to the EMF (electromagnetic fields) emanated from this electric product may interfere with functions of your pacemaker under certain circumstances.
- When the heating pad is not in use:
 - Set the slide switch on the controller to setting “O” (OFF)
 - The plug should be removed from the wall socket and the heating pad should be stored in a dry place, without additional weight on it.
 - The plug-in connector should be removed from the heating pad to avoid damages caused by twist or bend of the cable.

- When the product will not be used for a period of time, we recommend that you store it in the original packaging.
 - Allow it to cool down before folding and the storage.
 - Do not crease the heating pad by placing items on top of it during storage.
 - Store it in a dry place away from any liquids or sources of heat.
- This heating pad must be used with the type of the controller that is marked on the rating label only.

ITEMS INCLUDED IN THE PACKAGE

1 Heating Pad

1 Detachable cover

1 Controller with Cable and Plug-in Connector

1 Instruction Manual

1 Service Instruction

1 Membership Card

DESCRIPTION OF THE DEVICE AND CONTROLLER (please see fig.A)

1. Mains cable with plug

2. Controller

3. APS (Active Protection System) with 3-colored LED display (on both sides)

4. Slide switch for ON, OFF and temperature settings (1, 2, 3, 4)
5. Type of the controller
6. Detachable plug-in connector
7. Connection box
8. Heating pad
9. Detachable cover

MULTI-FUNCTIONAL

- Can be used with or without the detachable cover.
- One side of the detachable cover is cosy fleece for heat accumulation, the other side is mesh for heat radiation.

PREPARING FOR USE (please see fig. A, B)

The heating pad can be placed on parts of the body, such as shoulder, back, abdomen, calf and other parts where warmth is needed.

1. Always make sure the heating pad (8) is without any folds, creases or ruck-up.
2. Join the detachable plug-in connector (6) to the connection box (7). Note: the connection box should always be put towards the opening of the detachable cover (9) to be connected to the controller easily.
3. You can use this heating pad with or without

the cover (9). When you use the product with the cover, only use the one supplied with it.

4. Make sure the controller (2) is not covered by the sheet, pillow or any objects.
5. Plug the mains cable (1) to the wall socket.
6. Unplug the appliance from the wall socket when it is no longer in use.

SWITCHING ON

Before each time you use the heating pad, please make sure it is not bundled, folded or creased before it is switched on.

Connect the product only to 230 VAC.. Switch on the product by using the hand-operated slide switch (4) and there will be 3 times of beep sound (beep-beep-beep) to ensure the product has been operated correctly.

In order to warm up the product faster, it is recommended to initially set the heating pad at the highest temperature setting.

Temperature settings :

4 = maximum warmth

2-3 = moderate warmth

1 = minimum warmth

0 = OFF

APS (Active Protection System) – 3-Color LED

This product is equipped with APS (Active Protection System) (3) technology which detects errors on the operation or component failures. By the 3-color LEDs (3) which can be seen from both sides of the controller (2) and the beep sound, APS can help you to operate the heating pad easily and safely.

Green –Your heating pad has reached the desired temperature level

Orange –Your heating pad is heating up to reach the desired temperature level

Due to the temperature variation in different environments (room, bed, etc.), APS LED may change between green and orange colors within seconds which indicates continuous heating when the heating pad is in use. Under this circumstance, please note the product is functioning properly and normally.

Red light and Beep sound – Possible malfunction or overheating, stop immediately.

In the following situations, the red light and beep sound will come on to indicate warning:

- When the power is on but detachable plug-in connector (6) is not connected properly : there will be beep sound every second with the red light on. Please connect the detachable plug-in connector (6) to the connection box (7) and

switch on the controller again.

- When the critical components are damaged: there will be continuous beep sound with the red light on. Please disconnect the mains cable from wall outlet immediately.
- When the heating wires or other components are broken and the device cannot work anymore: there will be beep sound every second with the red light on.
- When the heating pad (8) is folded or covered by objects, such as pillows and blankets, which cause an overheating concern, the device will beep every 2 seconds with the red light on. Please switch the heating pad off and make sure the pad is flat and/or remove the objects that are on top of the pad. You may switch the heating pad back on again after the pad cools down.

The warnings mentioned above cannot cover all defective situations as the damages on some components will not lead to red light or beep sound.

TURBO HEATING

The product is with a turbo heating function for user to feel warmth within 7-10 minutes after it is switched on.



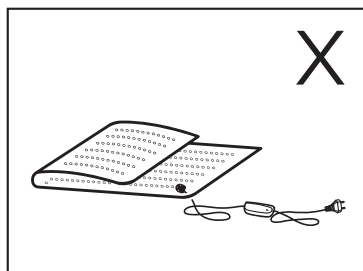
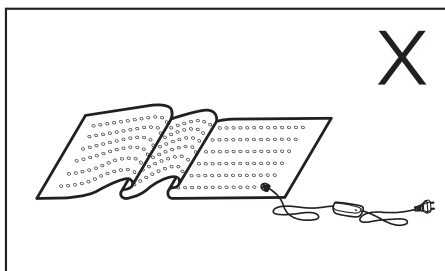
TIMER FUNCTION

Now you can enjoy the pleasant warmth. The product will be switched off automatically after about 90 minutes. In order to put the product into operation again, you must set the slide switch to setting 'O' first. After about 5 seconds, you can switch it on again.



CAUTION

Do not use the appliance when it is folded, creased, tucked in or drawn together or it may lead to overheating or shutdown.



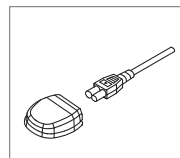
The electronic components inside the controller may cause the controller slightly warm when the heating pad is in use. Therefore, the controller must not be covered or placed on top of any heating sources when it is in operation.

You should not gauge the heating pad's temperature by hands because the skin on your body is more sensitive than hands. The temperature may feel lukewarm by hand but could be unpleasantly hot to your body.

The repairs to the product may only be undertaken by qualified persons by using original replacement parts. Repairs carried out by unqualified persons may cause substantial risk to the user.

CLEANING AND CARE

Heating pad:



- Before cleaning the heating pad (8), always unplug the product from the wall socket first. Remove the cover and disconnect the plug-in connector (6) from the connection box (7). Wait for the heating pad to cool.
- The cable and the controller (2) should be put in a dry place where it will not contact with water or other liquids.
- To clean the controller (2), use a dry, lint-free cloth. Do not use any chemical or abrasive cleaning detergents.
- Please note that the heating pad should not be dry-cleaned, wrung out, machine-dried, pressed, ironed or bleached.
- Small marks on the heating pad can be removed with a damp cloth.
- Set washing machine to a gentle washing cycle at 30°C, the heating pad should only be washed together with other textiles. Use a mild washing detergent for delicate fabrics and dose it according to the manufacturer's instructions.
- Always use a laundry bag for better protection of the holes and fabric.
- For dark color products, always wash separately.
- After washing, reshape the heating pad (8) to its original dimensions while it is still damp, and lay the heating pad flat on a moisture-absorbent towel, mat or clothes horse to dry it.
- Do not use pegs or similar items to attach the heating pad to the clothes horse, they may damage the heating pad.
- Please note that excessive washing will wear out the heating pad. For this reason, the appliance should only be washed a maximum of 10 times throughout its entire life.
- Only use the heating pad when it is complete dry.
- Never switch on the product to dry it.

Detachable cover:

- The detachable cover should be washed separately from the heating pad.
- Please note that the cover should not be dry-cleaned, wrung out, machine-dried, ironed or bleached.
- Always use a laundry bag for better protection of the fabric.
- After washing, reshape the cover to its original dimensions while it is

still damp, and lay the heating pad flat on a moisture-absorbent towel, mat or clothes horse to dry it.

STORAGE

If the heating pad will not be used for a long time, we highly recommend:

- Remove the plug-in connector from the connection box.
- Always let the appliance cool down first before folding and storing it.
- Store it in the original packaging and put it in a dry place.
- Do not put any object on the top of the appliance.

DISPOSAL

This appliance must not be disposed together with domestic waste but at a suitable local collection or recycling point. Please dispose of the heating pad in accordance with Directive on Waste Electrical and Electronic Equipment (WEEE). If there is any question, please contact the municipal authority for more information about disposal in your area.



WARRANTY

Please note Wellcare provides two-year limited warranty for this product. Wellcare warrants that this product will be free from defects in materials and workmanship for a period of two years beginning on the date of purchase.

During the two-year period beginning on the date of purchase, Wellcare will replace defective products covered under this limited warranty. Please note a clear copy of the purchase receipt for the product is required. To request limited warranty service, please return the defective product to the store where you purchased it with the clear copy of purchase receipt within the limited warranty period. The replacement product will assume the remaining limited warranty of the original product.

We advise you to call our helpdesk for any problems regarding the product before returning it to the store where you purchased it.

However, please note that our limited warranty does not cover any damage due to shipment of the products to you and external causes, including accident, abuse, misuse, problems with electrical power, usage not in accordance with product instructions, failure to perform reasonable maintenance, problems caused by use of parts and components not

supplied by Wellcare, and problems caused by unauthorized repair of Wellcare's product. Furthermore, our limited warranty does not cover any damage due to the defects known to exist by you when you purchase the product.

This limited warranty gives you specific legal rights, and you may also have other rights that vary from country to country (or jurisdiction to jurisdiction). Wellcare's responsibility for malfunctions and defects in product is limited to replacement as set forth in this limited warranty statement. All express and implied warranties for the product, including but not limited to any implied warranties of an conditions of merchantability and fitness for a particular purpose, are limited in duration to the limited warranty period set forth above and no warranties, whether express or implied, will apply after such period. Wellcare does not accept liability beyond the remedies set forth in this limited warranty statement or liability for indirect, incidental or consequential damages.

TECHNICAL DATA

Model : WE-167SPHD

Size : 40 (L) x 30 (W) CM

Voltage : 230V - 50Hz

Watts : 100W

Model : WE-167SPLHD

Size : 46 (L) x 35 (W) CM

Voltage : 230V - 50Hz

Watts : 100W

WELLCARE

wellcare-global.com